

Industrial

Sector Project Profiles



First Point Business Park – Units A1, A3, B3, E1, E2

Location	Doncaster, UK
Client	Catesby Property Group
Value	£17 million
Sector	Industrial



First Point Business Park is a large mixed use industrial and commercial development near the M18 in Doncaster, providing over 2 million sq.ft of speculative warehouse and office space. Kinetic were appointed by the developer and landlord Catesby Property Group to undertake the production of the performance specifications for the mechanical and

electrical services and site services infrastructure, for the A1, A3, B3 and E1 sites in 2007. In 2012 Kinetic will be completing the design of the E2 site which includes a large supermarket, managed workspace building and retail outlet.

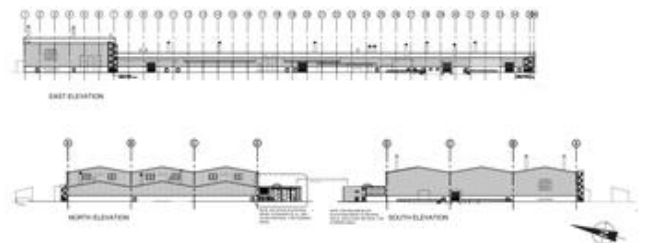
BAE Systems

Location	Washington, UK
Client	Highbridge Properties
Value	£30 million
Sector	Industrial

In 2009 Highbridge (Washington) Ltd were awarded the contract to develop a new £30million arms manufacturing facility in Washington, Tyne and Wear for BAE Systems. The facility provides in excess of 300,000 sq ft of industrial space housing large process machinery including shell forges, as well as all additional support space including offices, welfare and security facilities.

Kinetic were appointed by Highbridge (Washington) Ltd to provide M&E monitoring of the Contractor design, clerk of works duties and witnessing of the building services commissioning.

Kinetic were also appointed to provide BREEAM consultancy to assist the design and construction team in achieving a minimum BREEAM "Very Good" rating.



Dunston Bus Depot

Location	Gateshead, UK
Client	UK Land Estates
Value	£4.5 million
Sector	Industrial

The new Dunston bus depot provides a new and modern bus maintenance and storage depot for Go Ahead Northern and consolidates a number of ageing bus depots and facilities across the North East into one central facility.

Kinetic were appointed by the developer UK Land Estates to produce performance specifications for the mechanical and electrical services installations for the new bus depot for Go Ahead Northern, which includes bespoke end user requirements for both the administration and operational side of the facility. The building has also been designed to achieve a BREEAM "Very Good" rating.



Unit A4, Tyne Tunnel Trading Estate

Location	Newcastle, UK
Client	UK Land Estates
Value	£1 million
Sector	Industrial

Unit A4 is a 52,000 sq.ft industrial unit which has been refurbished by UK Land Estates to become the new head office for Chirton Engineering. The facility provides two separate workshop spaces as well as office and welfare accommodation.

Kinetic Engineers were appointed by UK Land Estates to carry out the full detailed Mechanical and Electrical design.



Cavotec, Teesside Industrial Estate

Location	Middlesbrough, UK
Client	UK Land Estates
Value	£1.18 million
Sector	Industrial

An existing industrial unit was stripped back to its steel frame and converted in to an 800m² two storey office block with meeting rooms and a 4000m² production space.

Kinetic Engineers were appointed to provide fully detailed Mechanical and Electrical services design, Clerk of Works duties and witnessing of the building services commissioning.



Mammoet, Teesside Industrial Estate

Location	Middlesbrough, UK
Client	UK Land Estates
Value	£5.7 million
Sector	Industrial

UK Land Estates are developing a new 34,000 sq.ft industrial unit on Teesside Industrial Estate to provide Mammoet with a new head office building. The facility will provide new workshop space, offices and welfare accommodation.

Kinetic Engineers were appointed by UK Land Estates to provide the Mechanical and Electrical tender documents to meet the Clients requirements.

