

# Hotel & Student Accommodation

## Sector Project Profiles

### Kennedy Gardens

Location	Billingham, UK
Client	VELA Group
Value	£6.5 million
Sector	Student Accommodation



Kinetic Engineers Ltd have been appointed directly by the VELA Group to undertake the M&E Performance Specification and drawings on this £6.5million residential refurbishment scheme of three blocks of accommodation in Billingham. As part of the commission Kinetic were also appointed to produce a Condition Report on the current district heating scheme and as a result of the report were appointed to undertake a new district heating scheme design. PV is also to be mounted to each room to help achieve the 10% renewables as detailed within our LZC Report.

### 24 Fossgate

Location	York, UK
Client	Bootes Management
Value	£0.95 million
Sector	Student Accommodation



An existing 18<sup>th</sup> century listed building which was converted into five individual dwellings and a cafe. Kinetic Engineers were appointed to provide Mechanical and Electrical performance specifications and Clerk of Works duties.

### Hungate Phase 2

Location	York, UK
Client	Castle Building Services
Value	£25 million
Sector	Student Accommodation



Hungate Phase 2 is a new 193 apartment building, built over 5 storeys with a 78 space basement car park. Kinetic Engineers was appointed by Castle Building Services to carry out a fully detailed Mechanical and Electrical services design. The project includes the use of electric heating due to the high insulation values and low building air permeability and includes an array of photovoltaic panels located on the roof.

### Winn Studios

Location	Newcastle, UK
Client	Norstead
Value	£15.3 million
Sector	Student Accommodation



Located in the student district of Newcastle, the Winn Studio development provides around 400 new student beds over 8 storeys for Northumbria University. Kinetic were appointed by Norstead to produce the full Contractor led M&E design in compliance with the M&E Performance Specifications. In addition Kinetic were also appointed by Metnor Construction to provide BREEAM consultancy and assist the design and construction team in achieving the required 'Very Good' BREEAM rating.

## Renny's Lane

Location	Durham, UK
Client	Studios
Value	£20 million
Sector	Student Accommodation

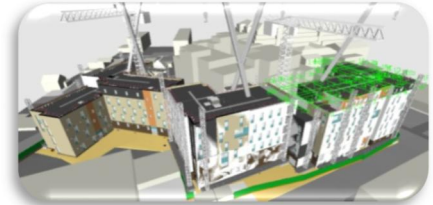


Renny's Lane Student Accommodation, Durham is a 362 bed, 5 storey new-build split in to 3 distinct blocks. It comprises of studio flats, cluster flats and state of the art communal facilities such as a gym, cinema, private dining area and resident's lounge. Due to the building usage profile, it is a prime candidate for Combined Heat and Power plant and as such incorporates this Low/Zero Carbon technology. Kinetic Engineers were appointed directly by the Client Studios to develop Mechanical and Electrical services proposals through from project inception, design development and on-site monitoring of installation works.

---

## Stoddart Street

Location	Newcastle, UK
Client	BAM
Value	£13 million
Sector	Student Accommodation



Stoddart Street Student Accommodation (The Shield) is a 409 bed, 6 storey new-build split in to 3 distinct blocks. It comprises of studio flats, cluster flats and communal facilities such as a gym, laundry and common room. Due to the building usage profile, it is a prime candidate for Combined Heat and Power plant and as such incorporates this Low/Zero Carbon technology. Kinetic Engineers were appointed initially by BAM Connislow to develop Mechanical and Electrical services proposals up to tender stage. Then by BAM Construction to follow through with detailed design, which included BIM level 2 and thermal modelling to prove Part L compliance.

---

## Roman House

Location	Derby, UK
Client	Urban Student
Value	£5 million
Sector	Student Accommodation



Roman House, Derby was a former local Council office building which was stripped-out, re-modelled and converted into state of the art student accommodation facilities. The newly refurbished building comprises of 128 student flats over 4 floors and includes communal facilities such as a gym, cinema and social hub. Kinetic Engineers were appointed directly by the Client Urban Student to develop Mechanical and Electrical services proposals right from project inception, on to design development, on-site monitoring and through to handover/occupation.

---

## Ibis Styles Hotel

Location	London, UK
Client	Accor Hotel Group
Value	£6.5 million
Sector	Hotels



Ibis Styles Hotel is a new 140 bed hotel development next to London Heathrow Airport. Kinetic Engineers were appointed by Castle Building Services to carry out the full detailed Mechanical and Electrical design. The project included VRF heating and cooling systems, supply & extract ventilation and domestic water services including CHP units to satisfy Part L requirements. The works were fully co-ordinated within extremely tight service zones.

---

## Holiday Inn Express

Location	Middlesbrough, UK
Client	InterContinental Hotels Group
Value	£12.4 million
Sector	Hotels



The project is in the heart of Middlesbrough town centre and comprised the refurbishment of a 4 storey derelict office building in to a 138 bed Holiday Inn Express Hotel with associated facilities. Kinetic Engineers were appointed by Castle Building Services to carry out the full detailed Mechanical and Electrical design. The project included VRF heating & cooling systems, supply & extract ventilation, domestic water services and above ground drainage. All fully co-ordinated within extremely tight service zones.